



311SM3-H58



Actual product appearance may vary.

SM Series Subminiature Basic Switch, Single Pole Double Throw (SPDT), 250 Vac, 5 A, Straight Lever Actuator, Quick Connect Termination

Features

- Long operating life
- Elongated mounting hole for easier, more accurate mounting
- Choice of actuation (plunger, as well as a variety of integral and auxiliary actuators)
- Choice of electrical termination (solder, quick connect, PCB)
- Choice of operating characteristics (sensitive differential travel as low as 0,0254 mm [0.001 in] maximum, low operating force to 0,56 N [2.0 oz] maximum)
- Optional series constructions available (gold contacts for low energy switching, bifurcated gold contacts for maximum reliability, power load switching capability to 11 A)
- MIL-PFR-8805 qualified listings available

Potential Applications

- Aerospace
- Instrumentation
- Appliances
- Vending machines
- Timing devices
- Office equipment
- Computer/business equipment
- Test instruments
- Medical/dental equipment
- Communications equipment
- HVAC equipment
- Manually operated devices
- Valves

Description

MICRO SWITCH™ SM Series subminiature basic switches are used for simple or precision on/off application needs. The MICRO SWITCH™ SM Series switches are slightly larger than the MICRO SWITCH™ SX Series switches. These switches combine small size and light weight with ample electrical capacity, precision operation and long life.

Product Specifications

Product Specifications	
Switch Type	MICRO SWITCH™ Subminiature 12,7 mm H x 6,35 mm W x 20,3 mm L [0.5 in H x 0.25 in W x 0.8 in L]
Sealed	No
Ampere Rating	5 A
Circuitry	Single Pole Double Throw (SPDT)
Actuator	Straight Lever
Termination	Quick Connect

Operating Temperature Range	-53 °C to 121 °C [-65 °F to 250 °F]
Voltage	250 Vac
Approvals	CSA,UL,ENEC
Actuator Length	44,8 mm [1.765 in]
Contact Type	Silver
Operating Force (O.F.)	0,15 N [0.53 oz] max.
Release Force (R.F.)	0,02 N [0.07 oz] max.
Pretravel (P.T.)	7,87 mm [0.310 in] max.
Overtravel (O.T.)	1,45 mm [0.057 in] min.
Differential Travel (D.T.)	2,8 mm [0.110 in] max.
Operating Position (O.P.)	7,11 mm ± 4,3 mm [0.280 in ± 0.170 in]
Housing Material	General Purpose Phenolic
High Temperature	121 °C [250 °F]
CE mark	61058-1
UL File #	E12252
CSA File #	LR41372
Agency Approvals and Standards	1054
Mounting Screw Size	22,1 mm [0.087 in]
Mounting Centers	9,65 mm [0.38 in]
Maximum Tightening Torque	0,22 N m [2.0 in lb]
Weight	2,72 g [0.006 lb]
Package Height	12,4 mm [0.49 in]
Package Width	6,35 mm [0.25 in]
Package Length	19,8 mm [0.78 in]
Recommended For	Most applications
Comment	Accepts Amp Inc. .058 Diam. Pin Receptacles
Availability	Global
UNSPSC Code	30211905
UNSPSC Commodity	30211905 Snap switches
Series Name	SM

MICRO SWITCH

FREERPORT ILLINOIS, U.S.A
A DIVISION OF HONEYWELL

FED. MFG. CODE 91929

SWITCH-BASIC

CATALOG LISTING

311SM3-H58

311SM3-H58

M

DRAWING NUMBER

8

8

ISSUE

8

REPLACES

PR-3923

CHECK

REVISIONS

A	MADE ETS	GLH	27 SEP 73
B	CO-32980	KPK	10 JAN 74
C	PR-3923	R C R	9 FEB 74
D	CO 37565	DAW	13 SEP 76
E	CO63767	J A P	17 NOV 88
F	CO-77768	S A D	12 JUL 94

CHECK

120

D

CHECK

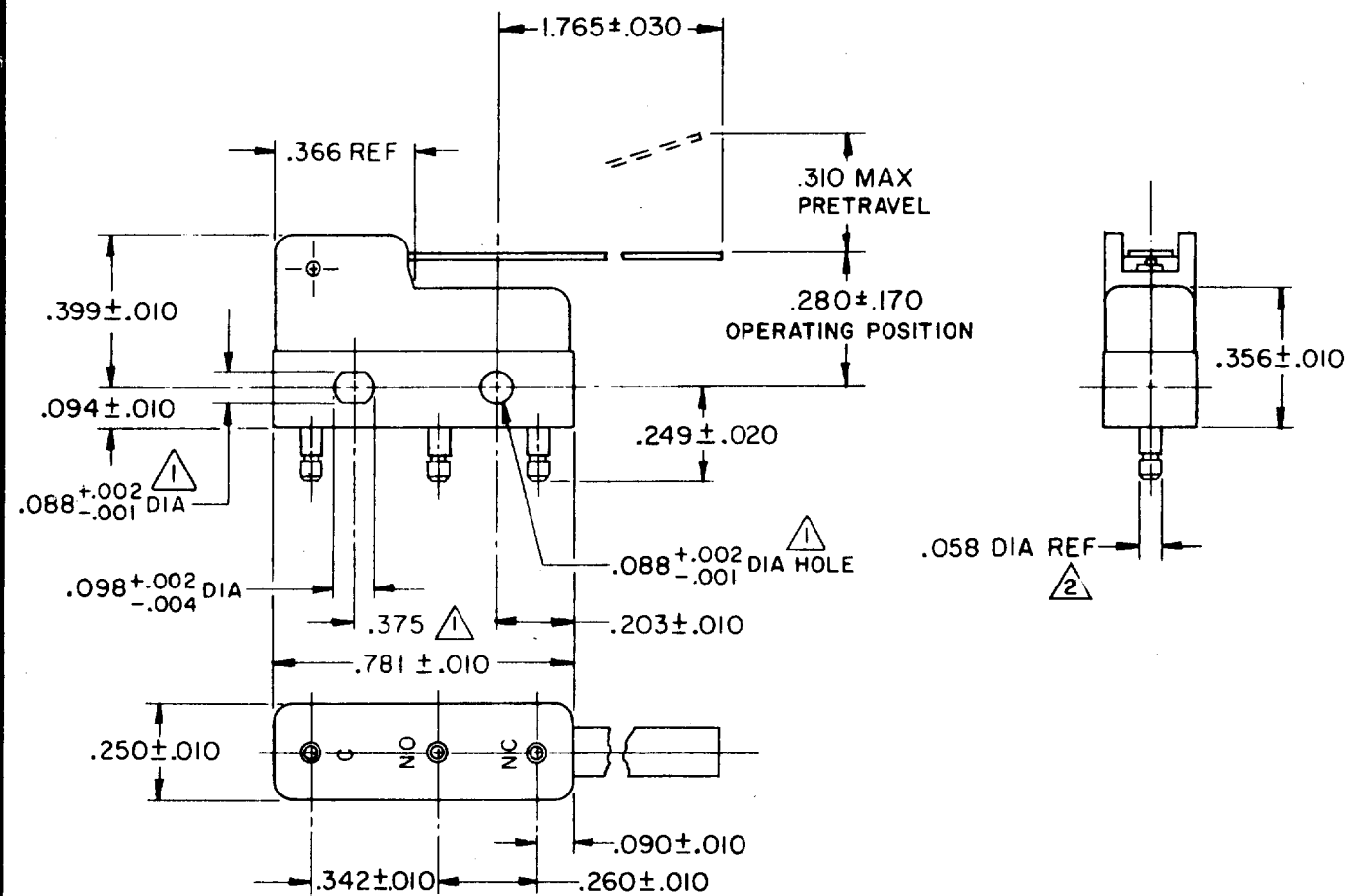
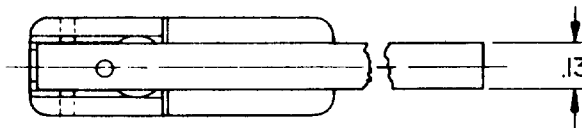
73

27 SEP 73

GLH

FO-52848

DRAWN



NOTE -
 1 MOUNTING HOLES WILL ACCEPT PINS OR SCREWS OF .087 MAX DIA ON .375 ± .002 CENTERS
 2 PLATED TERMINALS WILL ACCEPT "AMP INC" .058 DIA PIN RECEPTACLES.

3 - SWITCH WILL WITHSTAND TEMPERATURE OF 250° F

THIS DRAWING COVERS A PROPRIETARY ITEM AND IS THE PROPERTY OF MICRO SWITCH, A DIVISION OF HONEYWELL. THIS DRAWING IS NOT TO BE COPIED OR USED WITHOUT THE APPROVAL OF MICRO SWITCH.

CHARACTERISTICS	ELECTRICAL DATA	SCALE 2 : 1
OPERATING FORCE - - - - - 15 GRAM MAX	CONTACT ARRANGEMENT S P D T	DO NOT SCALE PRINT
RELEASE FORCE - - - - - 2 GRAM MIN	30 VOLTS DC RATING	UNLESS OTHERWISE NOTED DIMENSIONS ARE IN INCHES TOLERANCES ARE
DIFFERENTIAL TRAVEL - - - - - .110 MAX	INDUCTIVE - - - - - SEA LEVEL - - - 3 AMP	ONE PLACE (.0) ± .030
OVERTRAVEL - - - - - .057 MIN	50,000 FT - - - 2.5 AMP	TWO PLACE (.00) ± .015
	RESISTIVE - - - - - SEA LEVEL - - - 5 AMP	THREE PLACE (.000) ± .005
	50,000 FT - - - 4 AMP	ANGLES :
	MAXIMUM INRUSH - - - - - 24 AMP	WEIGHT .006 LB MAX
	L4 5A 250 VAC ~	